



# XG3246AC

MOBILE ELEVATING WORK PLATFORM

Comply with ANSI/CSA



# XG3246AC

## MOBILE ELEVATING WORK PLATFORM

### FEATURES

#### MEASUREMENTS

11.85 m (38' 11") working height  
Up to 320 kg (705 lb) lift capacity

#### PRODUCTIVITY

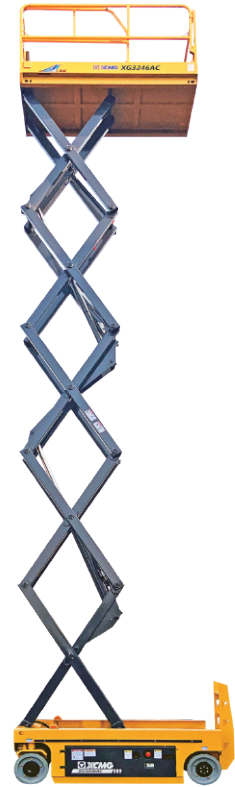
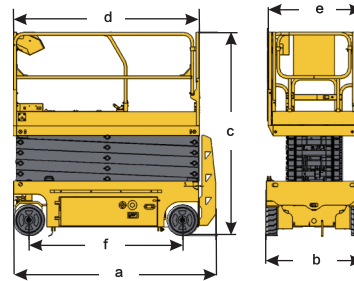
2.28 m (7' 6") x 1.120 m (3' 8") steel platform  
0.9 m (2' 11") extension platform  
Front wheel drive  
25% theoretical gradeability – stowed/lowered position  
Platform control with battery charge indicator and diagnostic display  
Manual platform lowering valve  
Both platform and ground control emergency stop activation  
Front wheel multiple disc brakes  
Manual brake release  
Solid non-marking tires  
Mobile pothole protection  
Tilt alarm  
Hour meter  
Lift and lower alarm  
Horn  
Dual flashing beacons  
Motion alarm  
Load warning system

#### POWER

24V DC

### OPTIONS

Platform work lamp  
Compressed air line to platform  
Platform AC power supply



### MAIN PARAMETER

| Item   |  | Metric  | Imperial              |
|--|--|---|-----------------------|
| Machine Dimensions   | a.Length (without ladder)              | 2.477 m (2.267 m)   | 8 ft 2 in (7 ft 5 in) |
|  | b.Width                                | 1.17 m  | 3 ft 10 in            |
|  | c.Height (Platform Folded)             | 2.48 m (1.93 m)   | 8 ft 2 in (6 ft 4 in) |
| f.Wheel base   |  | 1.877 m   | 6 ft 2 in             |
| Wheel track  |  | 1.043 m   | 3 ft 5 in             |
| Minimum ground clearance (Pot hole protector – raised/lowered) |  | 100 mm / 20 mm  | 4 in / 1 in           |
| Dimension of working platform                                  | d.Length                               | 2.28 m  | 7 ft 6 in             |
|  | e.Width                                | 1.12 m  | 3 ft 8 in             |
|  | Height                                 | 1.263 m   | 4 ft 2 in             |
|  | Extension length of auxiliary platform | 0.90 m  | 2 ft 11 in            |
| Machine Center of Gravity                                      | Horizontal distance to front axle      | 0.95 m  | 3 ft 1 in             |
|  | Height of Center of Gravity            | 0.663 m   | 2 ft 2 in             |
| Total weight of machine  |  | 3000 kg   | 6613 lb               |
| Maximum height of platform                                     |  | 9.85 m  | 32 ft 4 in            |
| Minimum height of platform                                     |  | 1.34 m  | 4 ft 5 in             |
| Maximum working height   |  | 11.85 m   | 38 ft 11 in           |
| Minimum turning radius (inner wheel/outer wheel)               |  | 0 m / 2.3 m   | 0 in / 7 ft 6 in      |
| Work platform lift capacity                                    |  | 320 kg  | 705 lb                |
| Work platform lift capacity – platform extended                |  | 115 kg  | 253 lb                |
| Work platform lift time  |  | 50 s - 75 s   | 50 s - 75 s           |
| Work platform descend time                                     |  | 43 s - 65 s   | 43 s - 65 s           |
| Maximum Drive Speed - Lowered                                  |  | 4 km/h  | 2.49 mph              |
| Maximum Drive Speed - Elevated                                 |  | 0.8 km/h  | 0.5 mph               |
| Maximum theoretical gradeability                               |  | 25%   | 25%                   |
| Tilt warning angle (side, forward, and backward)               |  | 1.5° / 3°   | 1.5° / 3°             |
| Rated motor power  |  | 4.5 kW  | 6.03 hp               |
| Battery  | Model                                  | 3-EV-225/T-125  | 3-EV-225/T-125        |
|  | Voltage                                | 24 V  | 24 V                  |
|  | Capacity                               | 280 Ah  | 280 Ah                |
|  | Manufacturer                           | Leoch   | Leoch                 |
| Tire models  |  | Non-marking and solid / 381x127 mm Non-marking and solid / 1 ft 3 in x 5 in |                       |