



# XGS158J

MOBILE ELEVATING WORK PLATFORM

Comply with ANSI/CSA



# XGS158J

## MOBILE ELEVATING WORK PLATFORM

### FEATURES

#### MEASUREMENTS

50 m (164' ) working height  
Without Limited:300 kg (661 lb) lift capacity  
Limited: 460 kg (1014 lb) lift capacity

#### PRODUCTIVITY

2.4 m x 0.9 m (7'10" x 3') steel platform  
4WD  
Rough terrain foam-filled tires  
Self-leveling platform  
Hydraulic platform rotation  
Fully proportional joystick controls  
Hydraulic oil cooler  
Drive enable  
Hour meter  
Tilt alarm  
Lift and lower alarm  
Motion alarm  
360° continuous turntable rotation  
Locking turntable covers  
Positive traction drive  
Ground control box cover  
Engine status display  
Thumb rocker steering control  
Dual flashing beacons  
Emergency power unit

#### POWER

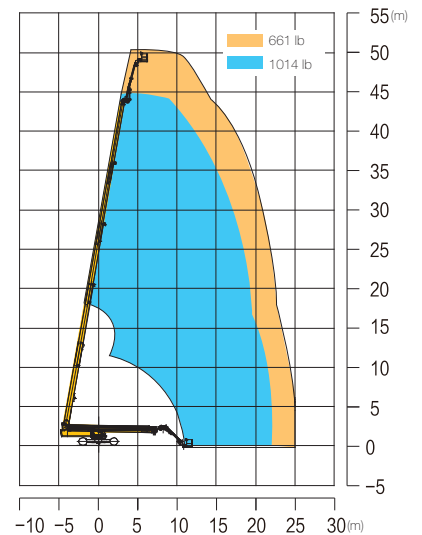
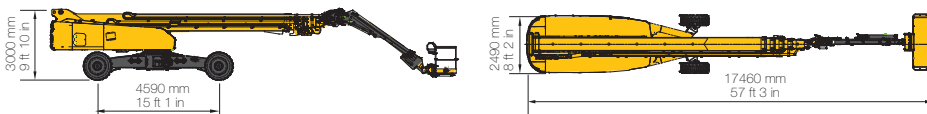
Kubota/Deutz

### HIGHLIGHT

- X type axle configuration, safe operation, convenient transportation.
- Electronic control four wheel steering, single axle, all wheel and crab shape three steering modes, flexible steering.
- Load sensitive hydraulic system, more energy saving operation;
- Boom weight drop, more energy saving;
- The deadweight of the boom decreases, the amplitude is more stable;
- Chip proportional valve hydraulic system, spool long stroke, more accurate speed regulation, more stable action;
- Boom action stepless speed regulation, speed control more free, more convenient;

### OPTIONS

Half height mesh platform  
Platform anti squeezing hand auxiliary track  
Cold resistant, fireproof, and biodegradable hydraulic oil  
Tool tray  
Fall protection components  
AC power cord connected to the platform



### MAIN PARAMETER

Item	Metric	Imperial
Overall dimensions		
Length(stowed/transportation)	17.46 m/12.55 m	57 ft 3 in/41 ft 2 in
Width(axle retracted/ extended)	2.49 m/5.03 m	8 ft 2 in/16 ft 6 in
Height	3 m	9 ft 10 in
Platform size	2.4 m x 0.9 m x 1.15 m	7 ft 10 in x 2 ft 11 in x 3 ft 9 in
Wheelbase(axle retracted/ extended)	5.22 m/4.59 m	17 ft 2 in/15 ft 1 in
Minimum ground clearance	400 mm	1 ft 4 in
Maximum working height	50 m	164 ft 1 in
Maximum platform height	48 m	157 ft 5 in
Maximum working range	25.2 m	82 ft 8 in
Lift capacity	300 kg(unrestricted)/460 kg (restricted)	661 lb(unrestricted)/1014 lb (restricted)
Boom luffing range	0°~80°	0°~80°
Jib luffing range	-45°~75°	-45°~75°
Turntable rotation	360 °continuous rotation	360 °continuous rotation
Platform rotation	160°	160°
Tailswing	2 m	6 ft 7 in
Maximum drive speed	4.5 km/h	2.8 mph
Minimum turning radius (outside, axle retracted/extended)	9.5 m/6.6 m	31 ft 2 in/21 ft 8 in
Weight	24440 kg	53881 lb
Gradeability	45%	45%
Engine type	Kubota/Deutz	Kubota/Deutz
Engine rated power	54.6 kW/2200 rpm; 55.4 kW/2600 rpm	73.2 hp/2200 rpm; 74.3 hp/2600 rpm
Tires	445/55-25 R28	445/55-25 R28